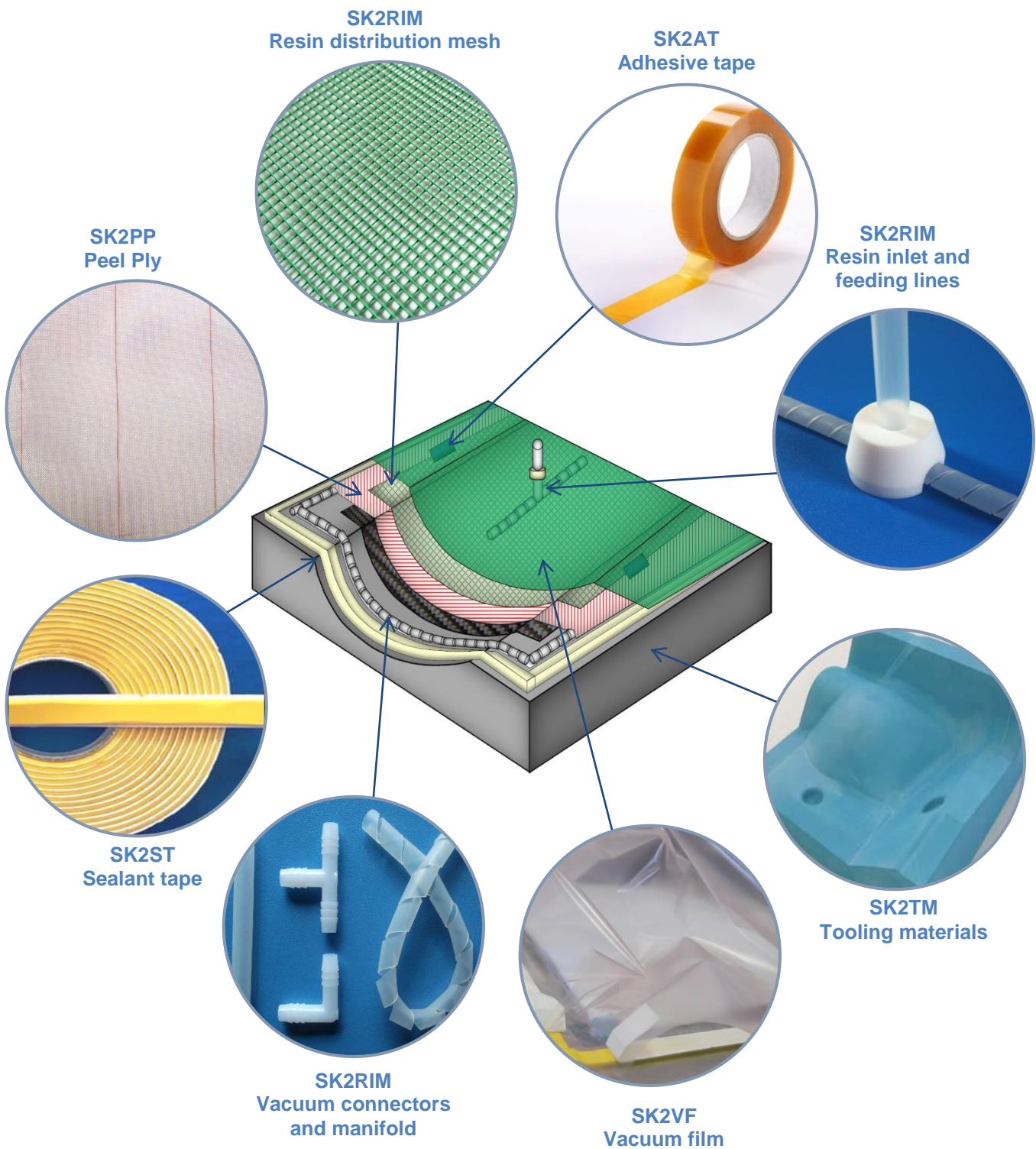
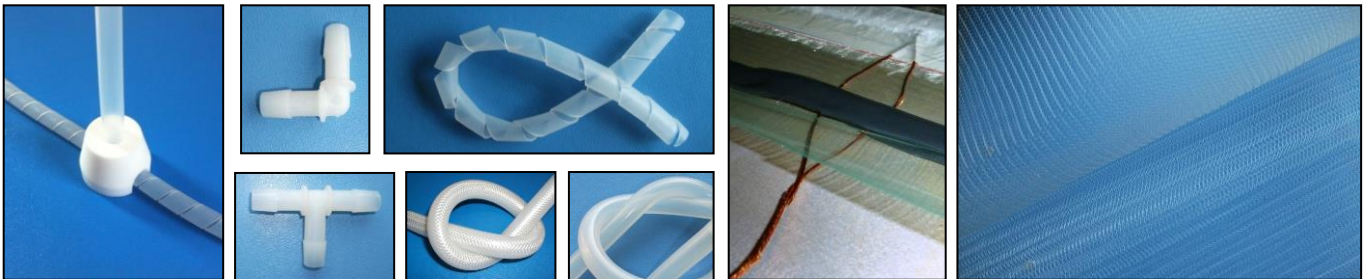
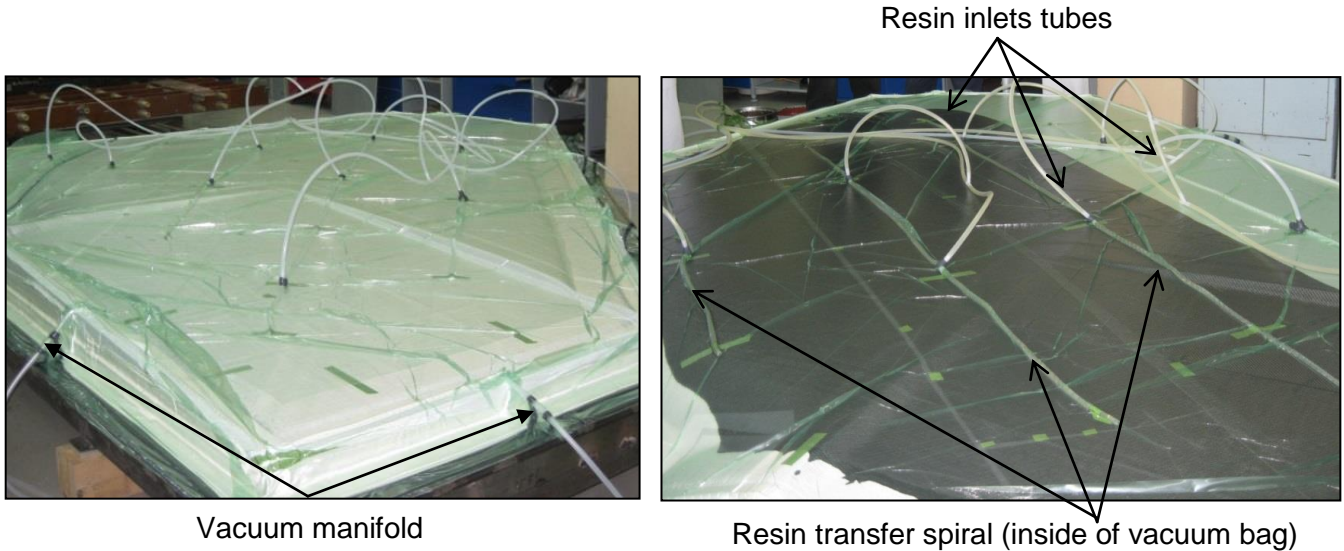


# Product selection guide

## Resin infusion

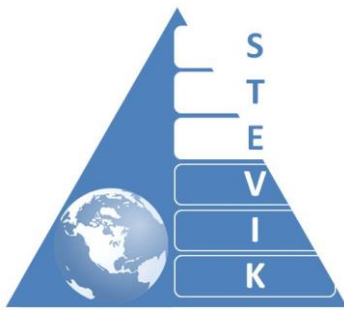
### ► Typical bagging schema by Resin Infusion Process





### ► Typical product selection for resin infusion by room temperature

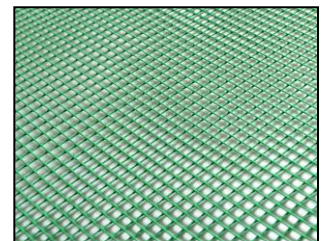
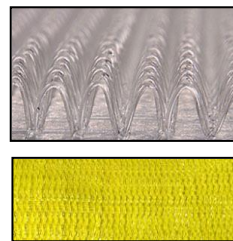
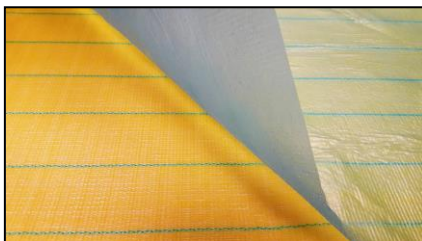
Product	References	Description
Vacuum film	SK2VF120-1	Coextruded nylon & polyethylene film, Colour: Green Max. T=120°C, elongation >460%, Thickness: 75 & 80µm, Available width till 16 m
	SK2VF170-1, 2	Nylon film, Colour: Pink, Max. T =170°C, elongation >465%, Thickness: 50 & 70µm, width till 8 m
	SK2VF180-1	Nylon vacuum film, clear, Max. T =180°C, elongation 380%, 50 and 75 µm till 8 m
Sealant tape	SK2ST130-1	Sealant tape, grey, Max. T =130°C, 3mm x 12mm
	SK2ST200-1	Sealant tape, yellow, T=200°C, 3mm x 12mm
	SK2ST205-2	Sealant tape, grey, Max. T =205°C, 3mm x 12mm
	SK2ST205-3	Sealant tape, yellow, T=205°C, 3mm x 12mm

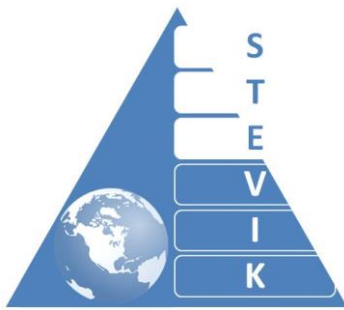


# Product selection guide

## Resin infusion

Peel ply	SK2PP190-1	Polyamide peel ply, white, red stripers, T=190°C, 64g/m <sup>2</sup> , 120 µm x 1,57m
	SK2PP185-2	Polyamide peel ply, white, blue stripers, T=190°C, 80g/m <sup>2</sup> , 160 µm x 1,63m
	SK2PP220-1	Polyamide peel ply, white with red stripes, max. T=220°C, 85g/m <sup>2</sup> , 1,80m x 200m, 360m <sup>2</sup> in roll.
	SK2PP230-1	Heat set polyamide peel ply, white with red stripers, T=230°C, 82g/m <sup>2</sup> , 1,63m x 100m
	SK2PP180-5	Economical polyamide peel ply, white with red stripers, T=180°C, 85g/m <sup>2</sup> , 1,80m x 200m
Resin distribution mesh	SK2RIM120-2	Extruded mesh, green, T=120°C, 103g/m <sup>2</sup> , width 1,04m
	SK2RIM115-1	Woven mesh, yellow, T=115°C, 165g/m <sup>2</sup> , width 1,25m / 2,50m
Tube mesh	SK2RIM125-1	Sewed tubular mesh, yellow, T=125°C, for tube till o.d. 13mm 50 l.m. roll
Combined product	SK2COM115-1	Combined product, made of yellow flow mesh SK2RIM115-1/ blue polyolefin release film SK2RF120-1 with perforation PK, T=115 °C
Double coated adhesive tape	SK2AT60-1	Double coated adhesive tape, white, Max. T=60°C, 271 µm x 25mm x 33m
Spiral wrap	SK2RIM90-1	Spiral wrap, white, PET, Max. T=90°C, available Ø inside 8 and 10 mm
Tube PET	SK2RIM90-2	Tube, PET, white, T=90°C, available Ø inside 8 and 10 mm
L-fitting	SK2RIM90-3	L-fitting , white, T=90°C, available Ø outside 8 and 10 mm
T-fitting	SK2RIM90-4	T-fitting , white, T=90°C, available Ø outside 8 and 10 mm
Omega profile feeding line	SK2RIM260-10	Silicone omega flow lines for resin inlet, T=260°C, white, inside Ø= 12mm, 15lm in roll
Adhesive Tapes	SK2AT205-1, 2, 3, 4	All purpose pressure sensitive tape, blue, T=205°C, adhesive: silicone, carrier type: polyester, different widths and adhesive thickness available
Resin infusion connector	SK2RIM000-3	PET, T=60°C for spiral Ø= 12mm and inlet tube Ø=12-13mm
Resin distribution tape	SK2RIM180-2	Tape, polyester, white, T=180°C, 20mm x 25m





# Product selection guide

## Resin infusion

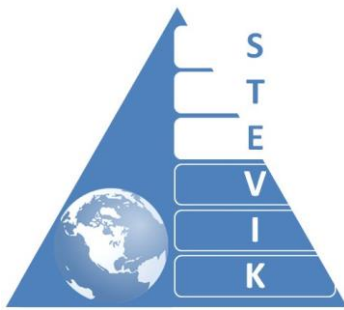
### Tools and Miscellaneous for resin infusion

Product	References	Description
Resin line clamp	SK2RIM000-1	Resin clamp for resin feed line metal
Resin line clamping device	SK2RIM000-5	Resin line clamping device for room temperature infusion
	SK2RIM000-6	Resin line clamping device for high temperature infusion
Adhesive spray	AIRVIK-5	Spray for temporary bonding in resin infusion process, 500ml can, blue
Resin traps	SK3VAC-5L	Vacuum trap for resin 5L
	SK3VAC-15L	Vacuum trap for resin 15L
	SK3VAC-53L	Industrial vacuum trap for resin 53L
Mobile vacuum system	SK1MOVAC-1, 2	Vacuum system on the mobile platform with 1 (or 2) vacuum pump 18 m <sup>3</sup> /h (or 28m <sup>3</sup> /h), 1 (or 2) vacuum trap of 14,7l volume with full view cover, adjustable vacuum level, 3 quick disconnection plugs, 3 clamping fittings for the tube with external diameter 12mm to connect resin channels.



### ► Typical product selection for resin infusion by $\leq 180^{\circ}\text{C}$

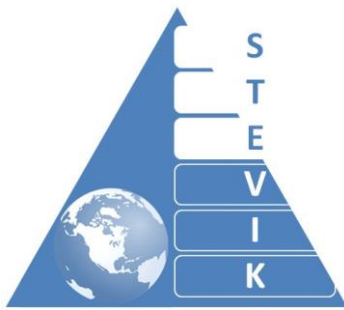
Product	References	Description
Vacuum film	SK2VF180-1	Nylon vacuum film, clear, Max. T =180°C, elongation 380%, 50 and 75 $\mu\text{m}$ , width till 8 m
	SK2VF200-1	Soft nylon vacuum film, pink, Max. T =200°C, elongation 450%, 50 and 75 $\mu\text{m}$ , width till 8 m
	SK2VF205-1	Nylon vacuum film, green, Max. T =205°C, elongation 400%, 50 and 75 $\mu\text{m}$ , width till 3,56m



# Product selection guide

## Resin infusion

Sealant tape	SK2ST200-1	Sealant tape, yellow, Max. T =200°C, 3mm x 12mm
	SK2ST205-2	Sealant tape, grey, Max. T =205°C, 3mm x 12mm
	SK2ST205-3	Sealant tape, yellow, T=205°C, 3mm x 12mm
Peel ply	SK2PP190-3	Polyamide peel ply, white, Max. T=190°C, 90g/m <sup>2</sup> , 180 µm thermosetted
	SK2PP180-1	Polyester peel ply for premier and secondary structural bonding, white, Max. T=180°C, 102g/m <sup>2</sup> , 147 µm thermosetted
	SK2PP220-1	Polyamide peel ply, white with red stripes, max. T=220°C, 85g/m <sup>2</sup> , 1,80m x 200m, 360m <sup>2</sup> in roll.
	SK2PP200-2	Polyester peel ply, white with red stripes, T=200°C, 85g/m <sup>2</sup> , Max. T=200°C, 1,80m x 200m,
Resin distribution mesh	SK2RIM180-1	Soft woven distribution mesh, white, Max. T=180°C, 100g/m <sup>2</sup> , width 1,20m / 2,40m
	SK2RIM180-6	Rigid woven distribution mesh, white, Max. T=180°C, 105g/m <sup>2</sup> , width 1,25m / 2,50m
Double coated adhesive tape	SK2AT200-1	Double coated adhesive tape, white, T=200°C, 210 µm x 25mm/50mm x 50m
	SK2AT200-3	Double coated adhesive tape, white, protection liner white, T=200°C, adhesive type: acrylic, carrier type: polyester, 95 µm x 25/ 50mm x 33m
Spiral wrap for high temperature resin infusion	SK2RIM175-1	Spiral wrap, white, polyamide, Max. T=175-180°C, Ø inside 10 x outside 12 mm
Tube Silicone	SK2RIM260-1	Tube, Silicone, white, T=260°C, Ø inside 10 x outside 12 mm, other sizes are available
	SK2RIM260-5	Unreinforced hard silicone tube, inside Ø=7mm, outside Ø=15mm, other sizes are available
L-fitting for high temperature resin infusion	SK2RIM180-3	L-fitting, polyamide, white, T=180°C, 10mm x 10mm, other sizes are available
T-fitting for high temperature resin infusion	SK2RIM180-4	T-fitting, polyamide, white, T=180°C, 10mm x 10mm x 10mm. other sizes are available
I-fittings for high temperature resin infusion	SK2RIM180-5	I-fitting, polyamide, white, T=180°C, 10mm x 10mm, other sizes are available
X- Fitting for high temperature resin infusion	SK2RIM180-9	X-fitting, polyamide, white, T=180°C, 10mm x 10mm x 10mm x 10mm
Barb coupling adapter fittings	SK2RIM180-10	Passage from internal Ø 12mm to internal Ø 8mm
Omega profile feeding line	SK2RIM260-10	Silicone omega flow lines for resin inlet, T=260°C, white, inside Ø= 12mm, 15lm in roll
Adhesive Tape	SK2AT205-1, 2, 3, 4	All purpose pressure sensitive tape, blue, T=205°C, adhesive: silicone, carrier type: polyester, different widths and adhesive thickness available
Resin infusion connector	SK2RIM000-3	PA, T=180°C for spiral Ø= 12mm and inlet tube Ø=12-13mm
	SK2RIM000-2	PTFE, T=260°C for spiral Ø= 12mm and inlet tube Ø=12-13mm
Resin distribution tape	SK2RIM180-2	Tape, polyester, white, T=180°C, 20mm x 25m



### Tools preparation and release

Product	References	Description
Tool Release	SK2TR000-1	Mikon® R-45 Cleaner for the removal of silicone, sealing compounds and release agents rests.
	SK2TR250-1	Mikon® Wax liquid W-88+, Release liquide / sealer wax-water based
	SK2TR450-10	Mikon® W-70/F, Water based PTFE release agent, without any silicones or silanes
	SK2TR450-9	Mikon W-41+ACFT waterbase semipermanent release agent specially developed for aircraft industry
	SK2TR450-7	Mikon® 765MC, Semi-permanent, solvent-based mould release agent with high level of slipping, multipropose, fast curing
	SK2TR450-1	Mikon® 399 MC, Modelmaster sealer / primer for porous surfaces to seal them with a high gloss finish
	SK2TR450-3	Mikon® 799 MC, Mould sealer for new or freshly cleaned mould surfaces, multipropose, fast evaporating

